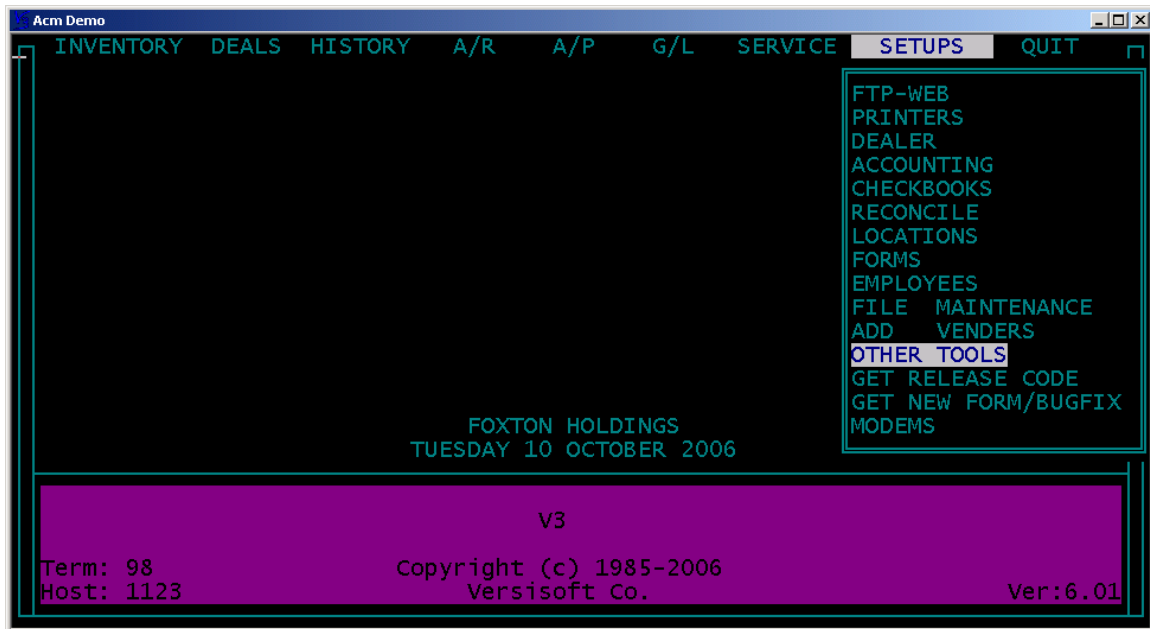
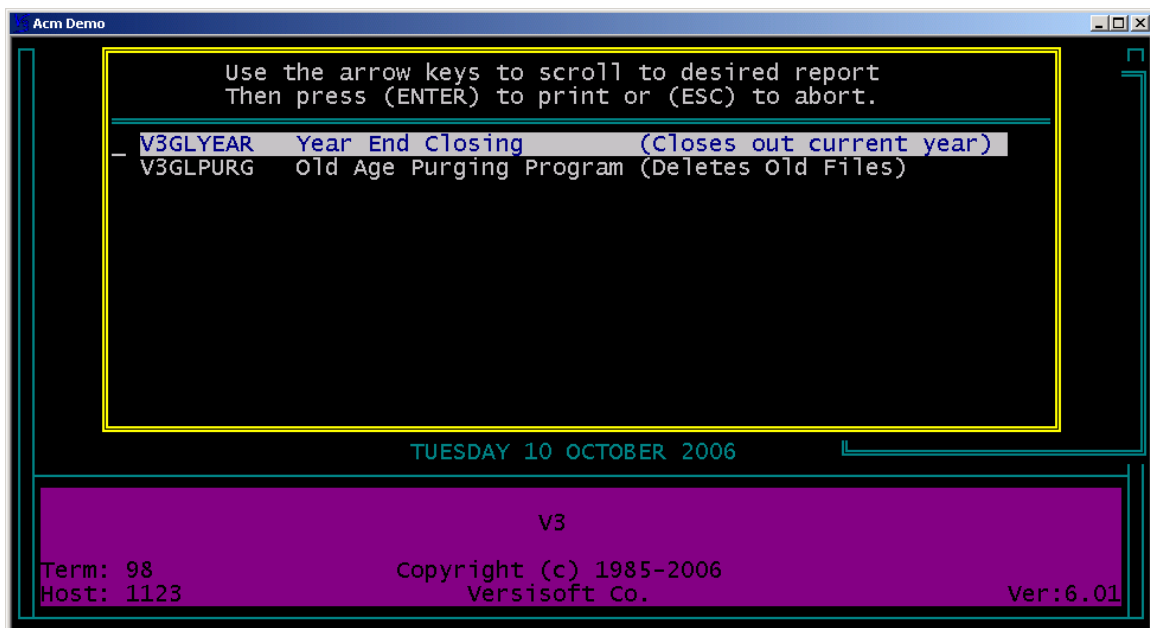




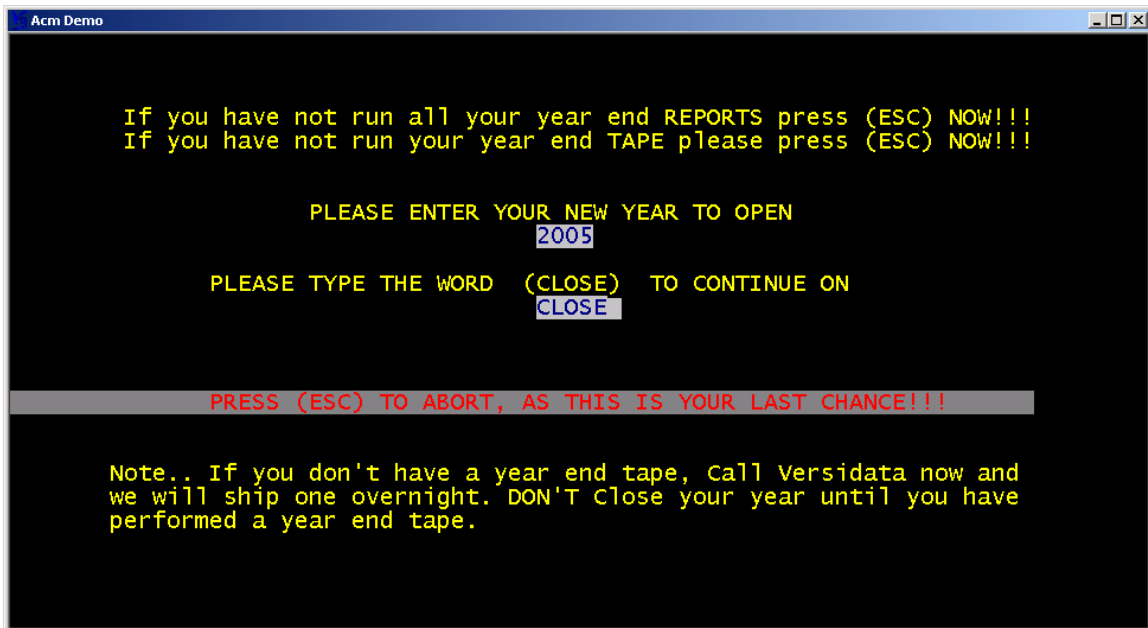
## OTHER TOOLS



## **YEAR END CLOSING:**

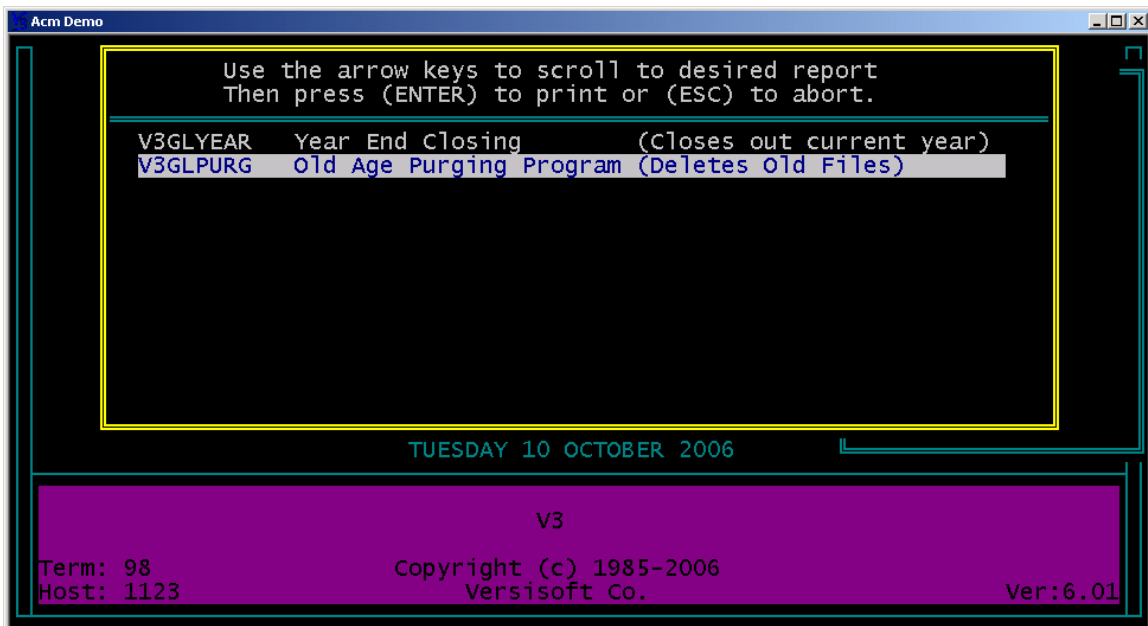


This program purges your GENERAL LEDGER transactions for the current year and clears all profit & loss accounts. The entry to move retained earnings must be done through the GENERAL JOURNAL as a one sided entry.



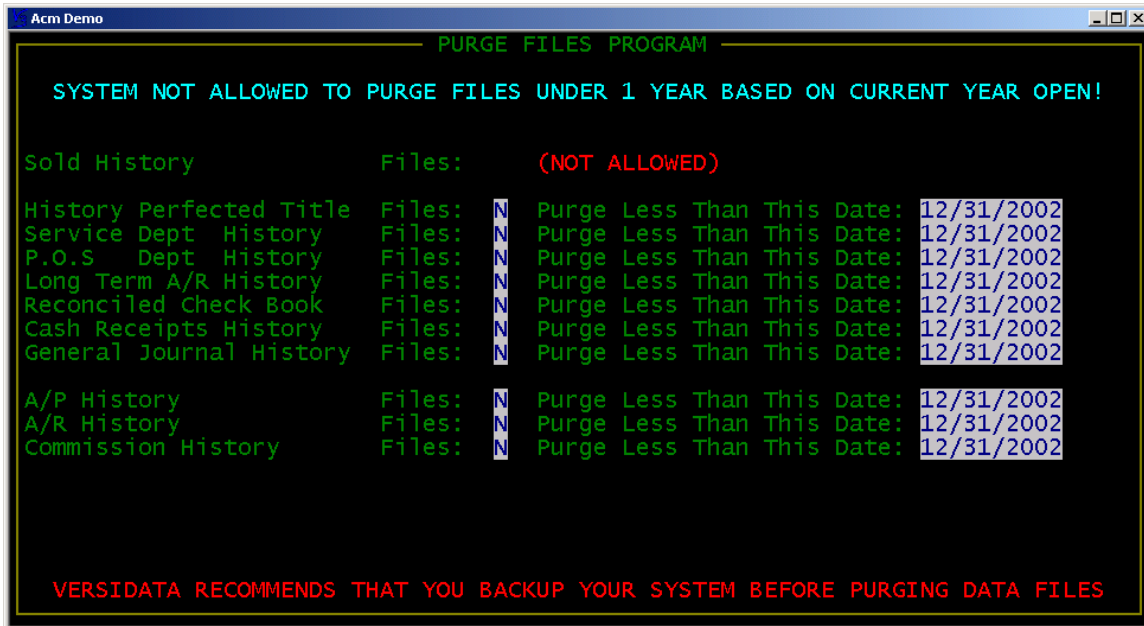
Be sure to run all your reports before closing the year, as this function will purge all transaction detail for the general ledger.

### V3GLPURG



This function allows you to purge certain history files. This is generally not necessary unless you are dealing with years of data you will never need to access as the software is made to hold virtually endless data. This function can be used to make thin out history

data files; however, it is **STRONGLY** recommended to backup these files before deleting them permanently.



The purge program allows you to sort through data by module and/or date parameters.

V3 software notes:

---

---

---

---

---